

EDMUND HOUSE

BIRMINGHAM

FINAL FLOORS REMAINING AT EDMUND HOUSE

Located in the heart of Birmingham's thriving Colmore Business District, Edmund House offers high-quality Grade A office accommodation, including a refurbished 6th floor providing 6,311 sq ft and a fully fitted 9th floor suite of 4,693 sq ft with 38 desks.

Within a five-minute walk of Birmingham Snow Hill and Birmingham New Street stations, Edmund House is perfectly positioned for commuters, with underground parking, a cycle store and shower facilities also available.

edmund-house.co.uk



9th floor fitted suite



Reception

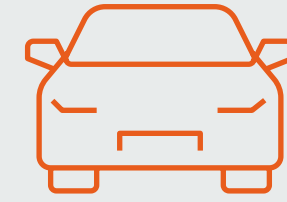


9th floor fully fitted suite

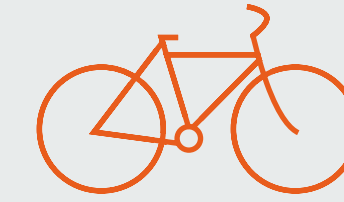
THE BUILDING

Impressive basement facilities include ramp-accessed secure cycle storage and dry room, quality changing and shower facilities and excellent secure parking at a ratio of 1:1,348 sq ft, including EV charging spaces.

THE BUILDING



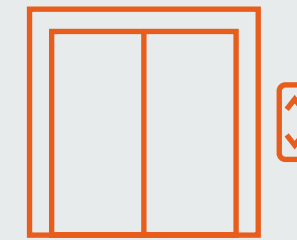
On-site car parking



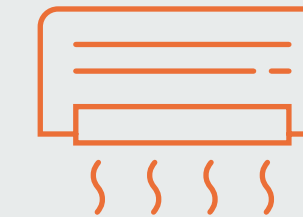
Cycle & shower / changing facilities



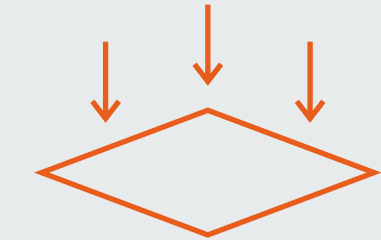
LED lighting



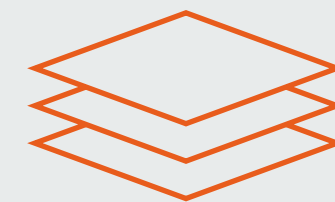
Three 12 person passenger lifts



New VRF ceiling based air conditioning system



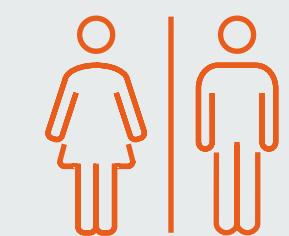
Micro-perforated metal suspended ceiling



Raised access floors

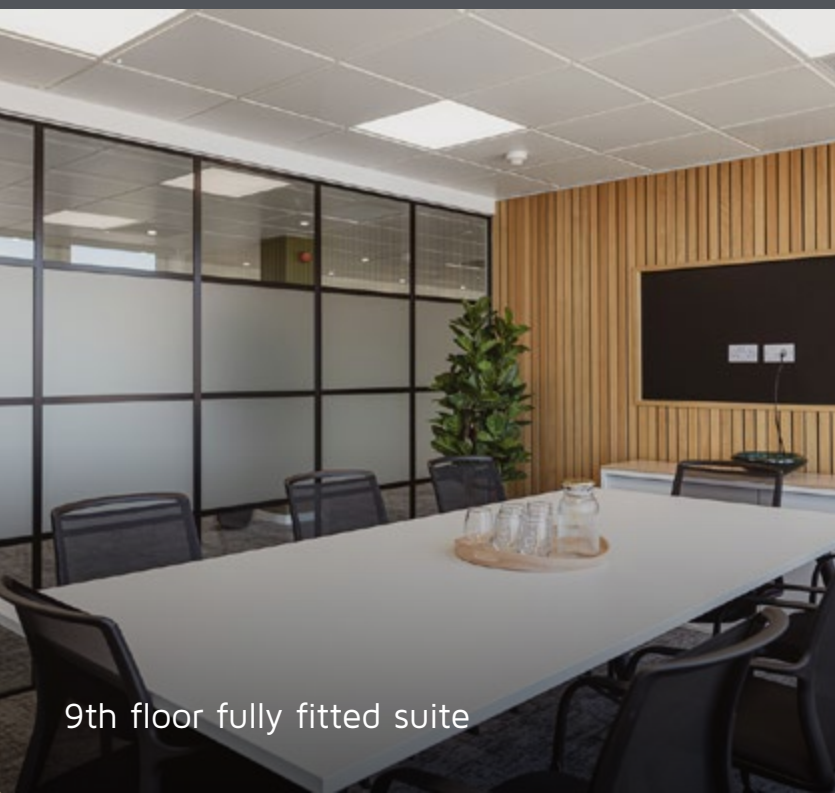


EPC rating - A (19)



WCs on all floors (including accessible)

EXISTING OCCUPIERS



9th floor fully fitted suite

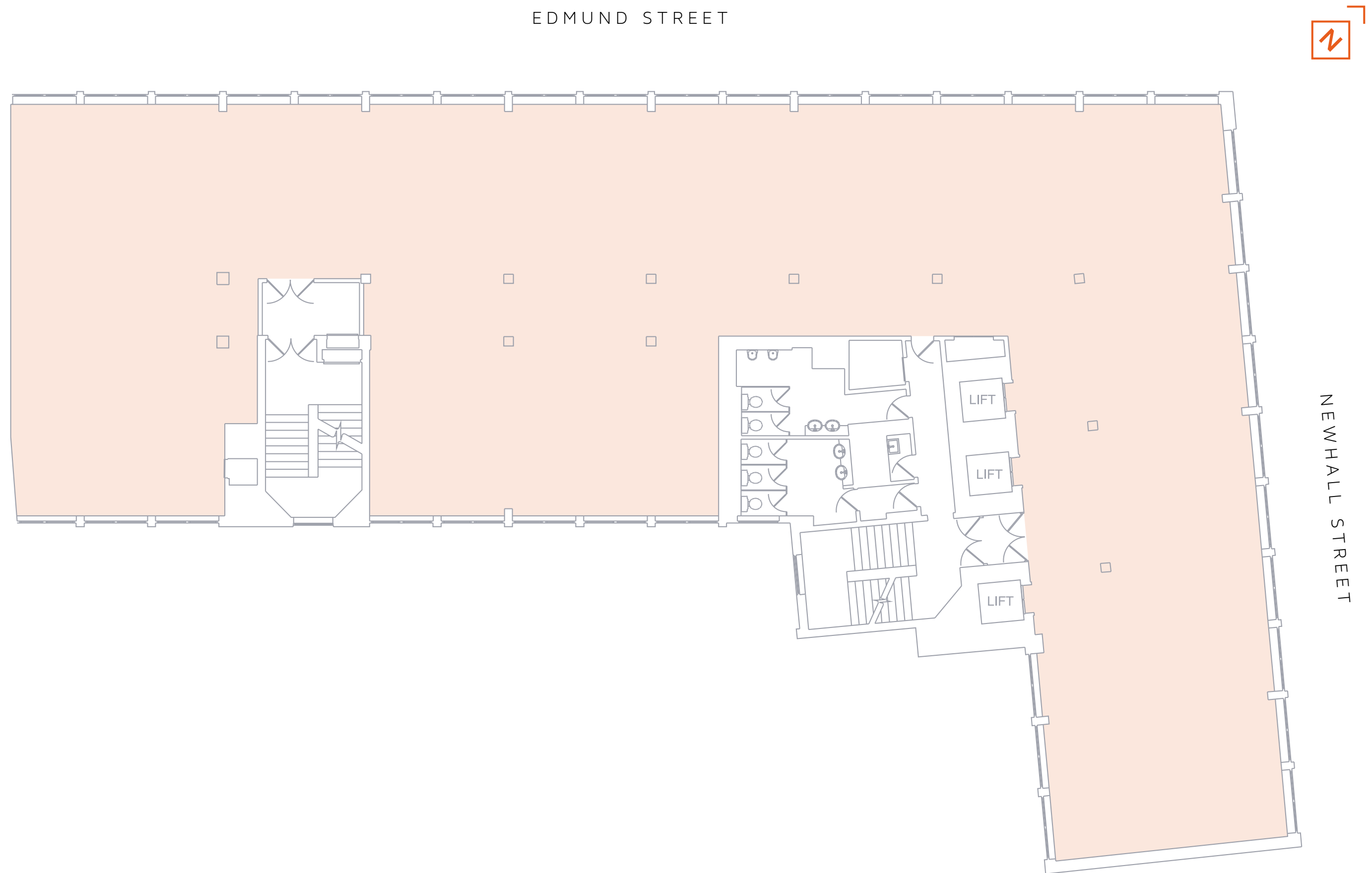
SIXTH FLOOR

6,311 sq ft
586 sq m

The flexible floorplate provides exceptional working space with an abundance of natural light.



6TH FLOOR



SIXTH FLOOR

6,311 sq ft
586 sq m

1x 10 person meeting room

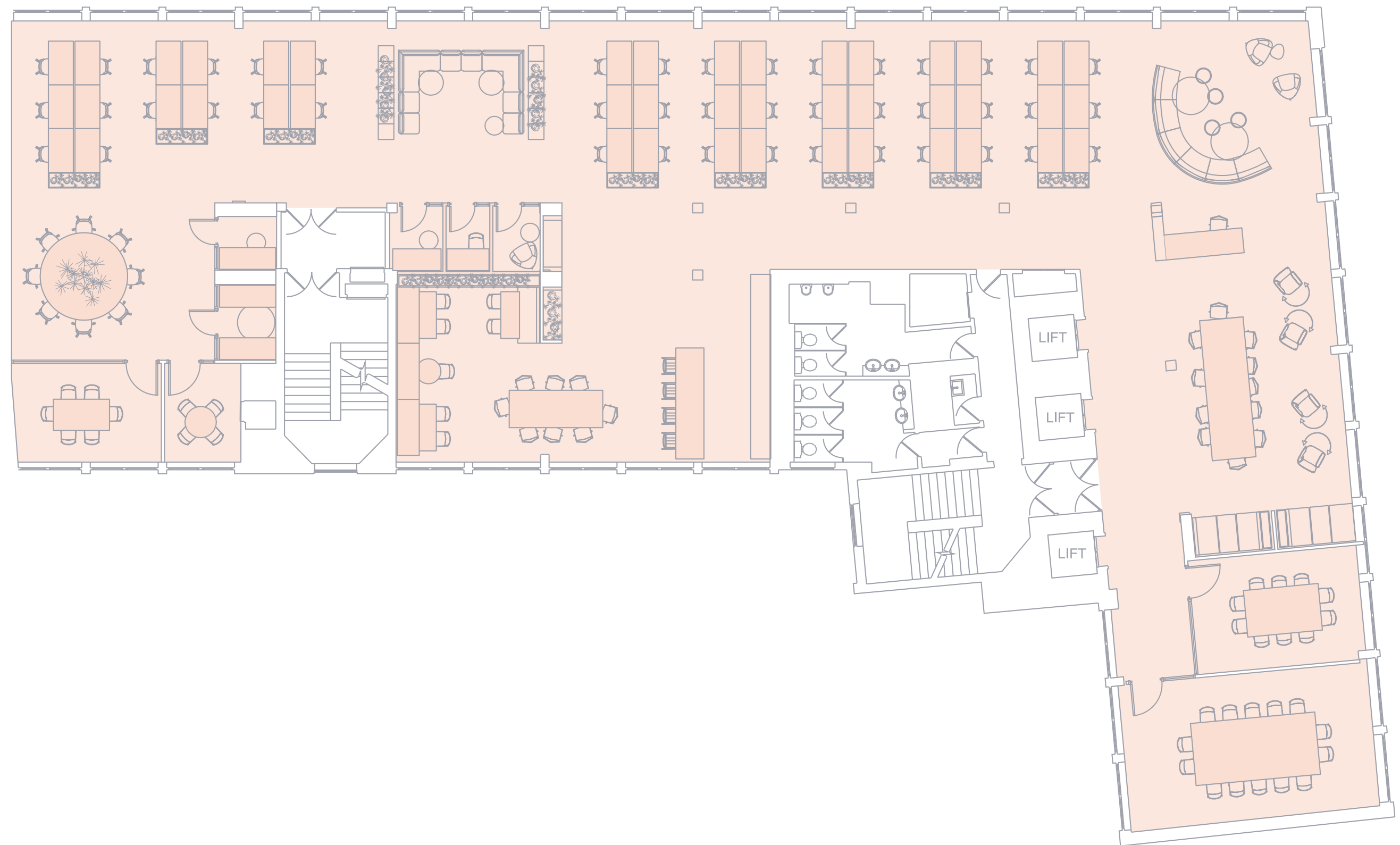
1x 14 person meeting room

44x workstations

2x general use meeting rooms

5x booth meeting rooms

EDMUND STREET



NEWHALL STREET

6TH FLOOR SPACE PLAN

NINTH FLOOR

4,693 sq ft
436 sq m

38 desks

1 x 12-person boardroom

2x 8-person meeting room

1x 6-person meeting room

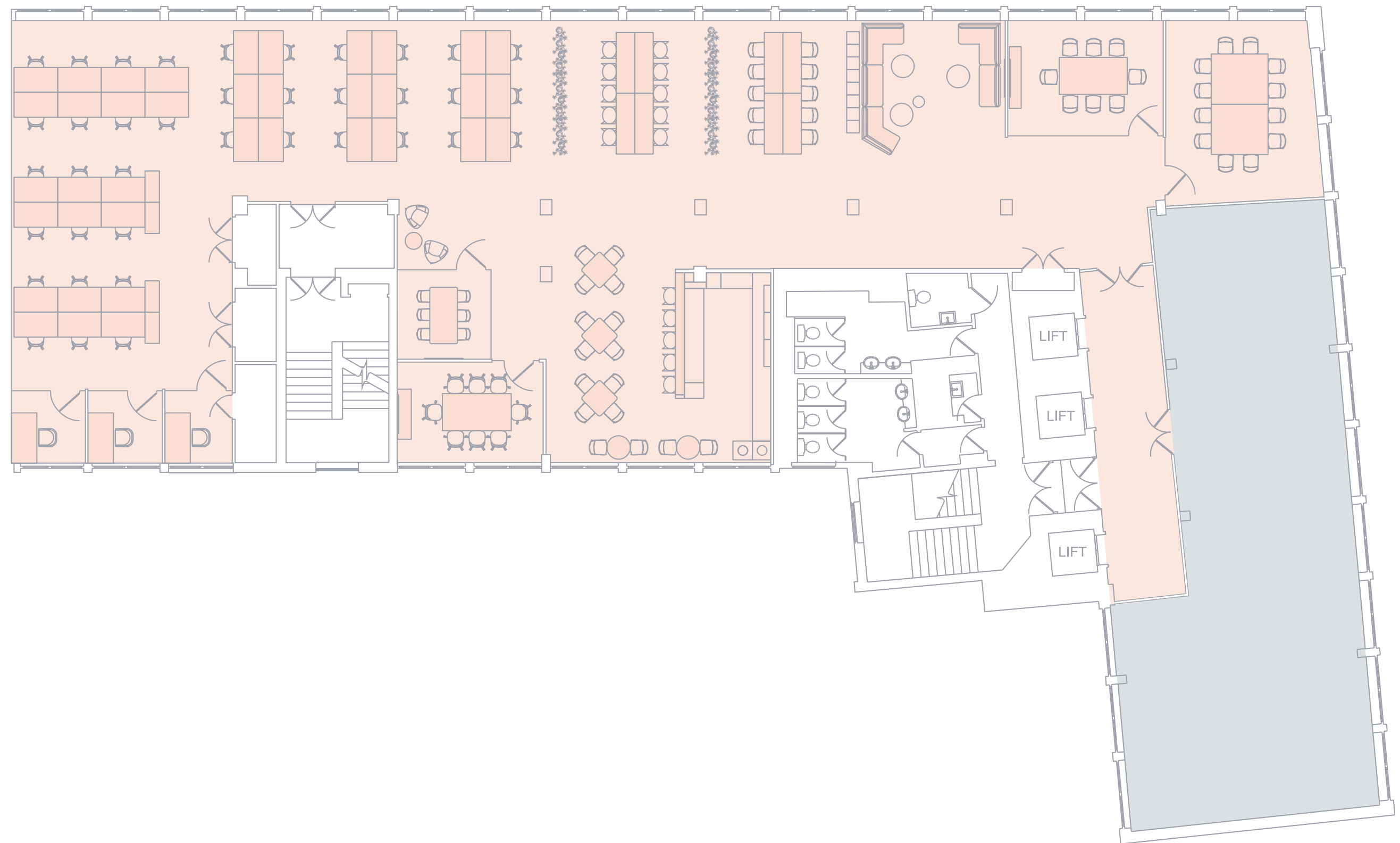
3 x 1-person focus rooms

Breakout kitchen

Reception and visitor lounge

2 x collaboration tables

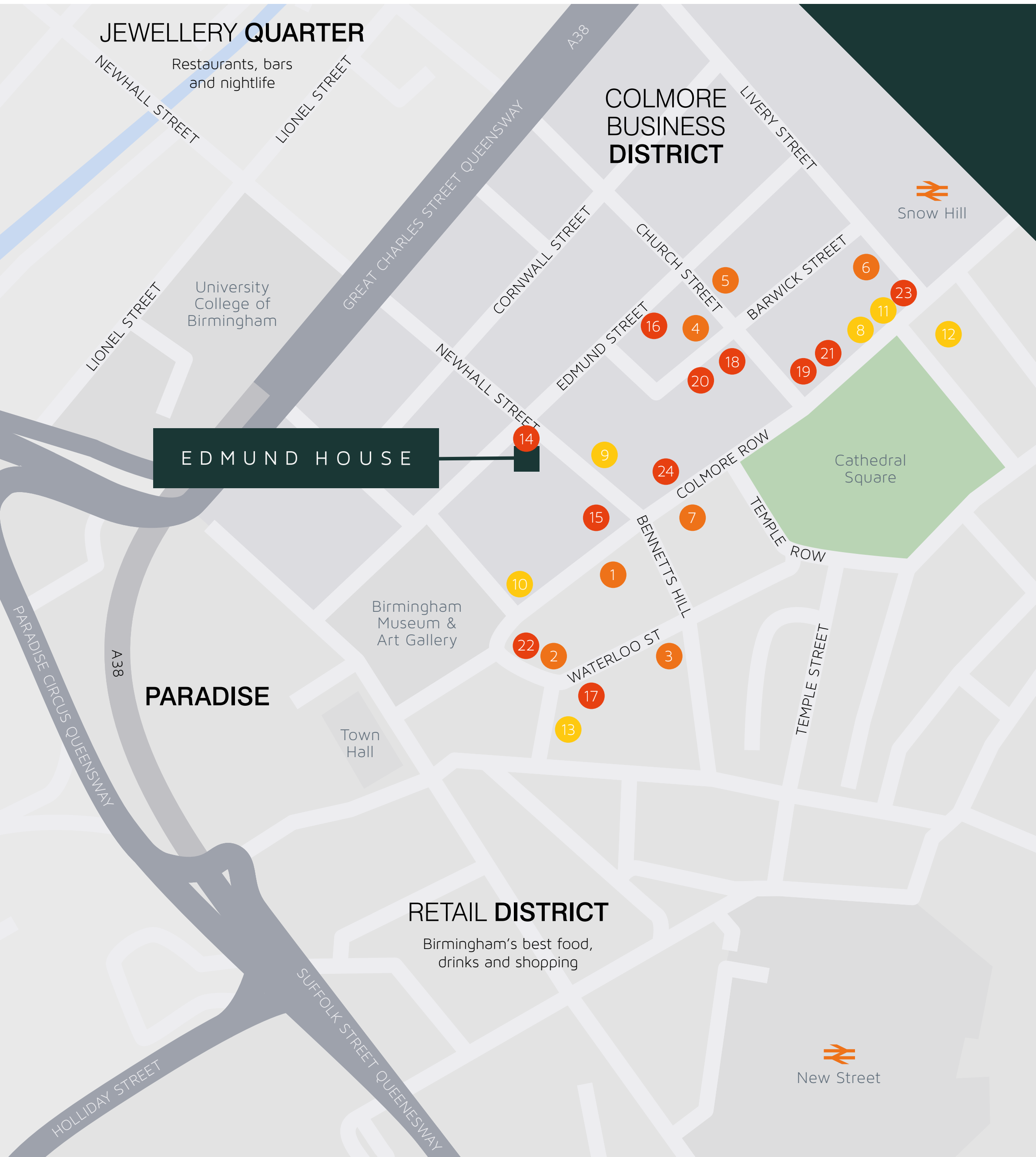
EDMUND STREET



NEWHALL STREET



9th floor fitted suite



THE AREA

Edmund House is within 5 minutes of both Birmingham New Street and Snow Hill stations, and with HS2 on the way, Central London will be accessible in 49 minutes door to door.

BARS

- 1 The Colmore
- 2 Purecraft Bar & Kitchen
- 3 The Lost & Found
- 4 The Roebuck
- 5 Hotel du Vin & Bistro
- 6 Primitivo
- 7 Vagabond

COFFEE SHOPS

- 8 Philpotts
- 9 Pret A Manger - Newhall St
- 10 Starbucks Coffee
- 11 200 Degrees
- 12 Pret A Manger
- 13 Medicine Bakery

RESTAURANTS

- 14 Asha's
- 15 24 Stories
- 16 Plates by Purnell's
- 17 Adam's Restaurant
- 18 Gaucho
- 19 Gusto
- 20 Fogo de Chao
- 21 The Alchemist
- 22 Theatrix
- 23 Pasture
- 24 Six by Nico



1 MINUTE TO COLMORE ROW
At the very centre of Birmingham's business district



1 HOUR 20 TO CENTRAL LONDON
Be in the capital in less than hour and a half



5 MINUTES WALK TO NEW STREET AND SNOW HILL
With regular trains to London Euston



10 MINUTES TO BIRMINGHAM INTERNATIONAL
By train from Birmingham New Street Station

Contact our joint agents to find out more:

CBRE



Theo Holmes
theo.holmes@cbre.com
+44 (0) 7967 802 656

Jonathan Ottewell
jottewell@savills.com
+44 (0) 7972 000 150

Luke Nowacki
luke.nowacki@cbre.com
07880 164166

Paddy Amphlett
paddy.amphlett@savills.com
07779 912 253

Asset managed by:

Clearbell

edmund-house.co.uk

IMPORTANT NOTICE: CBRE, GVA and Savills for themselves and for the vendors or lessors of the property whose agents they are give notice that: (i) these particulars are given without responsibility of CBRE, GVA and Savills or the vendors or lessors as a general outline only for the guidance of prospective purchasers or tenants, and do not constitute the whole or any part of an offer or contract; (ii) CBRE, GVA and Savills cannot guarantee the accuracy of any descriptions, dimensions, references to condition, necessary permissions for use and occupation and other details contained herein and any prospective purchaser or tenant should not rely on them as statements or representations of fact but must satisfy themselves by inspection or otherwise as to the accuracy of each of them; (iii) no employee of CBRE, GVA and Savills (and their joint agents where applicable) has any authority to make or give any representation or warranty or enter into any contract whatsoever in relation to the property; (iv) VAT may be payable on purchase price and/or rent, all figures are quoted exclusive of VAT, intending purchasers or lessees must satisfy themselves as to the applicable VAT position, if necessary by taking appropriate professional advice; (v) except in respect of death or personal injury caused by the negligence of CBRE, GVA and Savills, its employees or servants, CBRE, GVA and Savills will not be liable, whether in negligence or otherwise howsoever, for any loss arising from the use of these particulars save to the extent that any statement made in these particulars has been made fraudulently by CBRE, GVA and Savills. Designed by j2.net. June 2026.